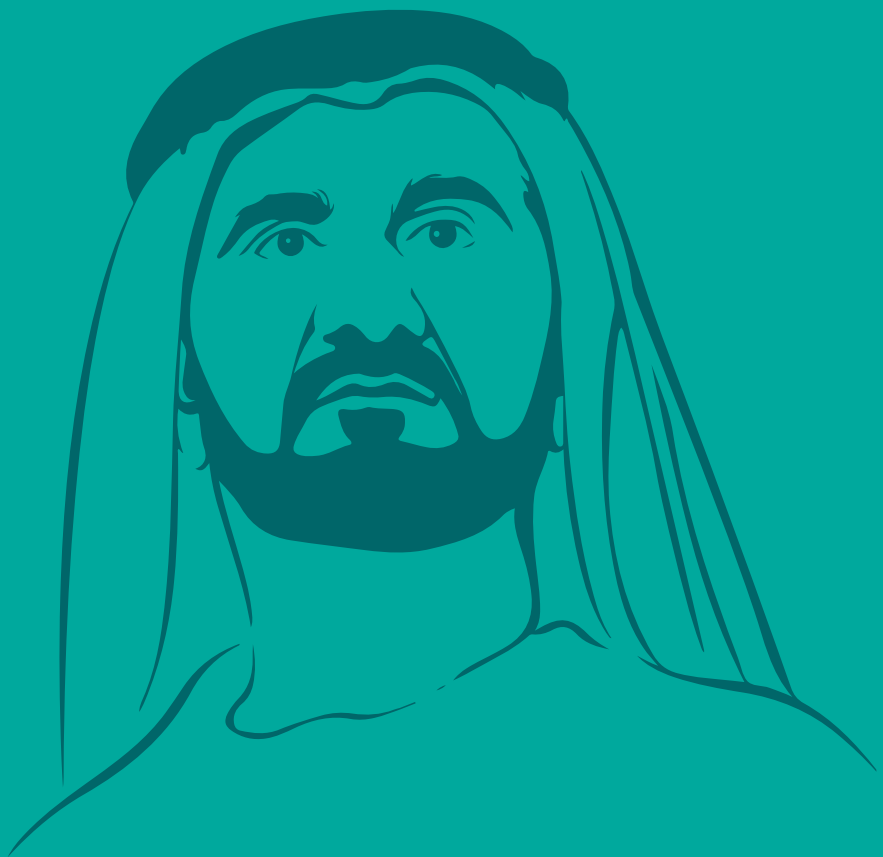




ontime
Staffing Redefined
Since 2001



“Determination, strategy and vision for the future are our real resources in the quest for excellence and success.”

HH Sheikh Mohammed bin Rashid Al Maktoum

STAFFING REDEFINED

Ontime Manpower Supply is one of the prominent manpower supply companies in Dubai with an excellent record of supplying efficient and cost-effective personnel for various industries throughout the UAE. Established in 2001, it has now redefined the process of staffing in the Middle East with timely delivery of employees to its customers whenever required. Ontime is registered with JAFZA and strictly adhere to all laws and legislations of Ministry of Human Resources & Emiratization (MOHRE).

We provide trained and certified personnel in accordance with the demands of various businesses contributing considerably to the productivity and efficiency of their total workforce.

Our hiring options are wide and flexible so as to meet the demands of both short term and long term assignments.



WHY CHOOSE ONTIME

Ontime is timely and time-bound. It is an assurance, a commitment. Your requirements are met in Ontime perfectly and uncompromisingly within the given time. You can experience the quality of our service upon the desired result. We aspire to be the preferred outsourcing partner of our valued existing clients as well as the prospective ones. Ontime prefers solution-oriented clients' relationships to ensure sustainable progress both for the company and its stakeholders. Our area of service and its characteristics explained below.

- ▶ **Licensed to provide manpower services to companies all over UAE.**
- ▶ **Trained personnel certified to the industry standards.**
- ▶ **Ontime sponsor employees and manages them for you.**
- ▶ **Greater knowledge in staffing and access to a skilled pool of talent.**
- ▶ **Substantial experience in staffing solutions and renowned organisations in the client list.**
- ▶ **Cost-effective hiring options.**
- ▶ **Widespread category of staff for short and long term jobs.**
- ▶ **ISO Certified.**



OUR BRAND

Brand, we believe, is a virtue. Underlined by goodness, Ontime operates on values based on ethics, trust and integrity. Since staffing is all about people, humanism plays a vital role in this industry. So the vision and the subsequent service of the company itself becomes the brand.

The logo portrays the individual as an employee with the letter 'i'. The other dominating part of the logo is the feature of time which is brilliantly interlinked with the hour glass image with the logo.



ontime
Staffing Redefined



Ontime Manpower Supply, the leading manpower supply company in Dubai is one of the subsidiaries of Pearl Investment LLC. Pearl Investment has originated in India and is now active across the Middle East, Far East and South Asia, came into existence 75 years ago with unwavering vision and service oriented aspirations, the journey has now reached to a phase of glory and achievement. It has spread its wings and diversified into dominant fields like pharmaceutical distribution, e-commerce, edu-apps, mining, textile manufacturing and distribution, shopping malls, restaurants, etc.

Now Flora Hospitality, consisting of a collection of 9 properties in UAE and India is now at the helm of diversity. The company's UAE interests extend to hotels & tourism, real estate, facilities management, general trading and food outlets. Pearl Investment, in its eventful and fruitful journey is adhered to its eternal values and firm commitments. It promotes environmental protection among stakeholders. And more importantly, all operations and management systems are geared towards energy efficiency in support of sustainable development.



ASPECTS & PERSPECTIVE

VISION

To provide excellent outstanding and innovative staffing solutions to our customers with the highest level of quality and exceptional service.

MISSION

To provide superior customer service, innovation, quality and commitment to our valued customers and to provide favourable work environments where our employees meet their potential, progress in an atmosphere of excellence, make a difference and hence build a thriving worldwide enterprise.

VALUES

Ethics: We do the right things even when no one is watching us. Ethics is in everything we do to all our clients, partners & employees.

Trust: Trust is our deep-rooted culture at Ontime. We are a company built on trust by our clients, partners and employees since our inception.

Integrity: We believe Integrity can take you to new heights. It's a commitment by every employee to be honest at all times to all our clients.



SERVICES FROM ONTIME

Manpower Supply

Specialised Staffing

Facilities Management

Security Services

Payroll Solutions

On Demand PRO Services



SUCCESSFUL RESOURCE

MANPOWER SUPPLY

The success of a business is highly dependent on the performance of its workforce, which is propelled by the strength of trained and skilled employees. Ontime provides skilled manpower for your short term and long-term projects after a detailed assessment of staffing done by our experienced consultants. Rubbing shoulders with the best channel partners in the industries, we handle this process smoothly and efficiently.

Please see the diversity below:

- ▶ **General Helpers**
- ▶ **Warehouse Assistants**
- ▶ **Housekeepers**
- ▶ **Stewards**
- ▶ **Commis Chefs**
- ▶ **Office Boys**
- ▶ **Light & Heavy Vehicle Drivers**
- ▶ **Forklift Operators**
- ▶ **Welders**
- ▶ **Fabricators**
- ▶ **Electricians**
- ▶ **Painters**



THE ART OF STAFFING

SPECIALISED STAFFING

Ontime provides you diverse personnel according to your long term needs. The smooth go in management can be a system once expertise in place. Solutions will be a systematic process once skill finds its expression.

Personnel with dynamic skillset we have includes the below:

- ▶ **Accounts & Finance Staff**
- ▶ **Administration Staff**
- ▶ **Data Entry Operators**
- ▶ **Engineers**
- ▶ **Receptionists**
- ▶ **Promoters**
- ▶ **Nurses**
- ▶ **Chef de Partie**
- ▶ **Store Keepers**
- ▶ **Foremen**
- ▶ **HSE Officers**
- ▶ **Logistics Coordinators**
- ▶ **QC Inspectors**
- ▶ **Call Centre Operators**
- ▶ **Lab Technicians**
- ▶ **Barista**



ABLE MANAGEMENT

FACILITIES MANAGEMENT

Absolute professionalism and expertise in delivering meaningful and quality services to the clients, provide integrated and cost effective solutions in tune with the international standards. The services are diverse and related to wholesome staffing .

- ▶ **Integrated Facilities Management**
- ▶ **Office Cleaning**
- ▶ **Building Cleaning**
- ▶ **Disinfection Services**
- ▶ **Maintenance**
- ▶ **Hospitality Services**
- ▶ **Security Services**



ENHANCING SECURITY

SECURITY SERVICES

Providing suitable security staff according to the nature of operation. Efficient in placements that cater to the organization and its effective progress. The skill and talent is advanced and refined by our training. Security staff's arena of service is wide and sectorized. So you can choose the apt manpower and witness their result oriented performance.

Here are the connecting titles:

- ▶ Security Guards
- ▶ Security Supervisors
- ▶ CCTV Operators
- ▶ Car Park Attendants
- ▶ Life Guards
- ▶ Screening & Search Personnel
- ▶ Patrolling Personnel



PRECISE ABOUT PAY

PAYROLL SOLUTIONS

Payroll requirements get an effective answer and you can focus on the progressive part of your company. The productivity aspects can be enhanced through the multifaceted approach and Ontime is a one stop solution of all your payroll tangles.

- ▶ **Attendance Management**
- ▶ **Bank Account Opening for Employees**
- ▶ **Time Sheet Collection & Verification**
- ▶ **Salary Transfer via WPS**
- ▶ **Pay Slip Distribution**



PRO AT YOUR SERVICE

ON DEMAND PRO SERVICES

Ontime bridges relationship gap with trained and efficient PROs. It is important that your PRO communicates with your subjects effectively and transparently. The image building and promotional part, are thus get it essential form.

- ▶ **Employment & Residence Visa**
- ▶ **Mission Visa**
- ▶ **Contractual Visa**
- ▶ **Document Submission Assistance**
- ▶ **Assistance in approaching Government establishments**



INDUSTRIES WE CATER

Aviation

Banking & Finance

Construction

E-commerce

FMCG

Healthcare

Hospitality

IT

Logistics

Manufacturing

Oil & Gas

Retail



PAVING THE WAY
TO PROMISING
DESTINATIONS

ontime
Staffing Redefined



Ontime Manpower Supply

P.O. Box 62575, Dubai, UAE

T +971 4 25 66333 **F** +971 4 25 66111

E info@ontimeuae.com **W** www.ontimeuae.com

A Division of Pearl Investment LLC

